

The logo for AnalytX, featuring the word "AnalytX" in a white sans-serif font. The letter "X" is significantly larger and colored red, while the other letters are white. The background of the entire slide is a photograph of a dandelion seed head in a field of green grass under a bright blue sky with scattered white clouds. Several dandelion seeds are shown in mid-air, drifting away from the main seed head.

AnalytX

New York
London
San Francisco
Vero Beach

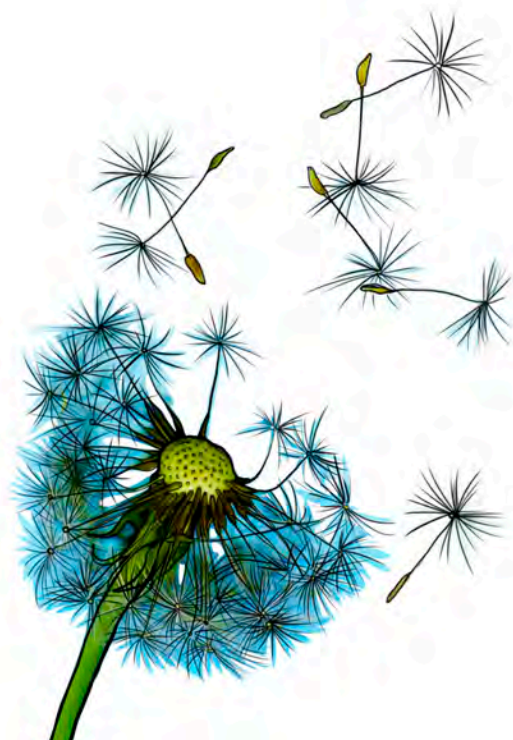
www.analytx.com

The logo for WebLP™, displayed in a white rectangular box. The word "Web" is in a dark grey sans-serif font, and "LP" is in a bold green sans-serif font. A small "TM" trademark symbol is positioned to the upper right of the "P".

WebLP™

Raise the bar. . .

. . .with WebLP electronic data rooms for both prospective and active investors. Tailored to your firm, corporate brand, and desired level of transparency, WebLP enhances IR teams' efforts with a powerful web portal. Beyond the software delivery mechanism, it's about the value that you provide to your investors and the speed and accuracy in which you can provide meaningful information. Stay in control by previewing results before they are published and pushing documents, including capital call letters, distribution notices, and other investor reports with PEO's one-touch processing.



Empower your Investors

Current and Prospective Investors access reporting with unprecedented timeliness. Capital Call letters, Distribution letters, full investor reporting, and even K-1s are instantly available online.

Get live updates to contact and reporting role changes from prospective and active investors. Investor information including contact and wire information, communication preferences, and distribution methods can be maintained by the Investor, based on their security rights.. Changes in information are reviewed by the GP before finalizing. Hence, Investors are empowered to maintain their own profile information, while the GP stays in control.

- Allow users to update wire info, contact info, and reporting roles based on their individual fund/investor security rights.
- Reduce calls from investors and prospective investors.
- Use tools built for checks and balances to reduce mistakes and embarrassments.
- Synchronize approved, user-changed data to PEO.



Fundraising

Fundraising is a crucial part of this business. Not only is it important to deliver due-diligence documents, but it is equally essential to keep track of a partner's interest in a prospective fund. Using the fundraising data-room in WebLP, you can give prospective investors access to these due-diligence documents and run on-demand audit history reports to keep track of all document downloads and user logins. For additional security and increased peace of mind, documents downloaded from WebLP can also be watermarked.



Managed Transparency

Unlike hand-to-hand combat software solutions in the marketplace, publishing to WebLP from PEO occurs with minimal effort. PEO's superb, one-touch, reporting engine provides full preview of capital call notices, distribution notices, and all other investor reporting, before publishing out to WebLP. The PEO investor reporting engine also takes the guesswork out of emailing generated reports or letters to investor. In a nutshell, you get a good night's sleep after posting quarterly results to WebLP!

Administration of limited partner users, logins, security, documents and reporting are conveniently maintained directly inside PEO. Further, full audit trails of reporting and document downloads, as well as full access metrics by limited partner user, are also available from PEO.

AnalytX

www.analytx.com

WebLP™

New York

1359 Broadway
Suite 1203
New York, NY 10018
(P)+1-212-731-2377
(F)+1-800-816-0763

London

International House
6th Floor
223 Regent Street
London W1B 2QD
United Kingdom
(P)+44 207 659 5959
(F)+44 207 659 5951

San Francisco

101 California Street
Suite 2450
San Francisco, CA 94111
(P)+1-415-738-4938
(F)+1-800-816-0763

Vero Beach

1880 82nd Avenue
Suite 206
Vero Beach, FL 32966
(P)+1-772-564-8066
(F)+1-772-564-8254